



Test Report

No.: GZ1103022819/CHEM

Date: MAR 11, 2011

Page 1 of 5

SHENZHEN LFN TECHNOLOGY CO., LTD.
5/F D DARECTOR INDUSTRIAL PARK FUXINLIN INDUSTRIAL PARK HANGCHENG XIXIANG STREET BAOAN
SHENZHEN CHINA

The following sample(s) was/were submitted and identified on behalf of the applicant as Infrared receive Module

SGS Job No. : SZ12874095
SGS Internal Reference No. : 2.1
Tested sample information : 120
Client Reference Information : LF0038、LF0038A、LF0038B、LF0038C、LF0038D、LF0038E、
LF0038F、LF0038G、LF0038K、LF0038L、LF0038M、LF0038N、
LF0038Q、LF0038R、LF0038S、LF0038H、VS838、VS1738、VS1838
Date of Sample Received : MAR 08, 2011
Testing Period : MAR 08, 2011 TO MAR 11, 2011
Test Requested : Selected test (s) as requested by client.
Test Method : Please refer to next page(s).
Test Result(s) : Please refer to next page(s).

Signed for and on behalf of
SGS-CSTC Ltd.

Manson Yang
Approved Signatory

This document is issued by the Company subject to its General Conditions of Service printed overleaf, available on request or accessible at http://www.sgs.com/terms_and_conditions.htm and for electronic format documents, subject to Terms and Conditions for Electronic Documents at www.sgs.com/terms_e-document.htm. Attention is drawn to the limitation of liability, jurisdiction and jurisdiction issues defined therein. Any holder of this document is advised that information contained hereon reflects the Company's findings at the time of its intervention only and within the limits of Client's instructions, if any. The Company's sole responsibility is to its Client and this document does not exonerate parties to a transaction from exercising all their rights and obligations under the transaction documents. This document cannot be reproduced except in full, without prior written approval of the Company. Any unauthorized alteration, forgery or falsification of the content or appearance of this document is unlawful and offenders may be prosecuted to the fullest extent of the law. Unless otherwise stated the results shown in this test report refer only to the sample(s) tested.



198 Keshu Road, Sciencetech Park Guangzhou Economic & Technology Development District, Guangzhou, China 510663 t (86-20) 82155555 f (86-20) 82075113 www.cn.sgs.com
中国·广州·经济技术开发区科学城科珠路198号 邮编: 510663 t (86-20) 82155555 f (86-20) 82075113 e sgs.china@sgs.com

Member of the SGS Group (SGS SA)



Test Report

No.: GZ1103022819/CHEM

Date: MAR 11, 2011

Page 2 of 5

Test Results:

Description for specimen 1 : Black body w/ silvery metal pin (mixed)

Elementary Analysis

Test Item(s)	Unit	Test Method (Reference)	Result	MDL
Cadmium (Cd)	mg/kg	IEC 62321: 2008, ICP-OES	N.D.	2
Lead (Pb)	mg/kg	IEC 62321: 2008, ICP-OES	N.D.	2
Mercury (Hg)	mg/kg	IEC 62321: 2008, ICP-OES	N.D.	2
Hexavalent Chromium (CrVI) by alkaline extraction	mg/kg	IEC 62321: 2008, UV-Vis	N.D.	2

Note:

1. mg/kg = ppm
2. N.D. = Not Detected (< MDL)
3. MDL = Method Detection Limit

Flame Retardants

Test Item(s)	Unit	Test Method (Reference)	Result	MDL
Sum of PBBs	mg/kg	-	N.D.	-
Monobromobiphenyl	mg/kg	IEC 62321: 2008, GC-MS	N.D.	5
Dibromobiphenyl	mg/kg	IEC 62321: 2008, GC-MS	N.D.	5
Tribromobiphenyl	mg/kg	IEC 62321: 2008, GC-MS	N.D.	5
Tetrabromobiphenyl	mg/kg	IEC 62321: 2008, GC-MS	N.D.	5
Pentabromobiphenyl	mg/kg	IEC 62321: 2008, GC-MS	N.D.	5
Hexabromobiphenyl	mg/kg	IEC 62321: 2008, GC-MS	N.D.	5
Heptabromobiphenyl	mg/kg	IEC 62321: 2008, GC-MS	N.D.	5
Octabromobiphenyl	mg/kg	IEC 62321: 2008, GC-MS	N.D.	5
Nonabromobiphenyl	mg/kg	IEC 62321: 2008, GC-MS	N.D.	5
Decabromobiphenyl	mg/kg	IEC 62321: 2008, GC-MS	N.D.	5
Sum of PBDEs	mg/kg	-	N.D.	-
Monobromodiphenyl ether	mg/kg	IEC 62321: 2008, GC-MS	N.D.	5
Dibromodiphenyl ether	mg/kg	IEC 62321: 2008, GC-MS	N.D.	5
Tribromodiphenyl ether	mg/kg	IEC 62321: 2008, GC-MS	N.D.	5
Tetrabromodiphenyl ether	mg/kg	IEC 62321: 2008, GC-MS	N.D.	5
Pentabromodiphenyl ether	mg/kg	IEC 62321: 2008, GC-MS	N.D.	5
Hexabromodiphenyl ether	mg/kg	IEC 62321: 2008, GC-MS	N.D.	5
Heptabromodiphenyl ether	mg/kg	IEC 62321: 2008, GC-MS	N.D.	5
Octabromodiphenyl ether	mg/kg	IEC 62321: 2008, GC-MS	N.D.	5
Nonabromodiphenyl ether	mg/kg	IEC 62321: 2008, GC-MS	N.D.	5
Decabromodiphenyl ether	mg/kg	IEC 62321: 2008, GC-MS	N.D.	5

This document is issued by the Company subject to its General Conditions of Service printed overleaf, available on request or accessible at http://www.sgs.com/terms_and_conditions.htm and for electronic format documents, subject to Terms and Conditions for Electronic Documents at www.sgs.com/terms_e-document.htm. Attention is drawn to the limitation of liability, jurisdiction and jurisdiction issues defined therein. Any holder of this document is advised that information contained hereon reflects the Company's findings at the time of its intervention only and within the limits of Client's instructions, if any. The Company's sole responsibility is to its Client and this document does not exonerate parties to a transaction from exercising all their rights and obligations under the transaction documents. This document cannot be reproduced except in full, without prior written approval of the Company. Any unauthorized alteration, forgery or falsification of the content or appearance of this document is unlawful and offenders may be prosecuted to the fullest extent of the law. Unless otherwise stated the results shown in this test report refer only to the sample(s) tested.



198 Keshu Road, Sciencetech Park Guangzhou Economic & Technology Development District, Guangzhou, China 510663 | (86-20) 82155555 | (86-20) 82075113 | www.cn.sgs.com
中国·广州·经济技术开发区科学城科珠路198号 邮编: 510663 | (86-20) 82155555 | (86-20) 82075113 | e sgs.china@sgs.com

Member of the SGS Group (SGS SA)



Test Report

No.: GZ1103022819/CHEM

Date: MAR 11, 2011

Page 3 of 5

Note:

1. mg/kg = ppm
2. N.D. = Not Detected (< MDL)
3. MDL = Method Detection Limit
4. "-" = Not regulated

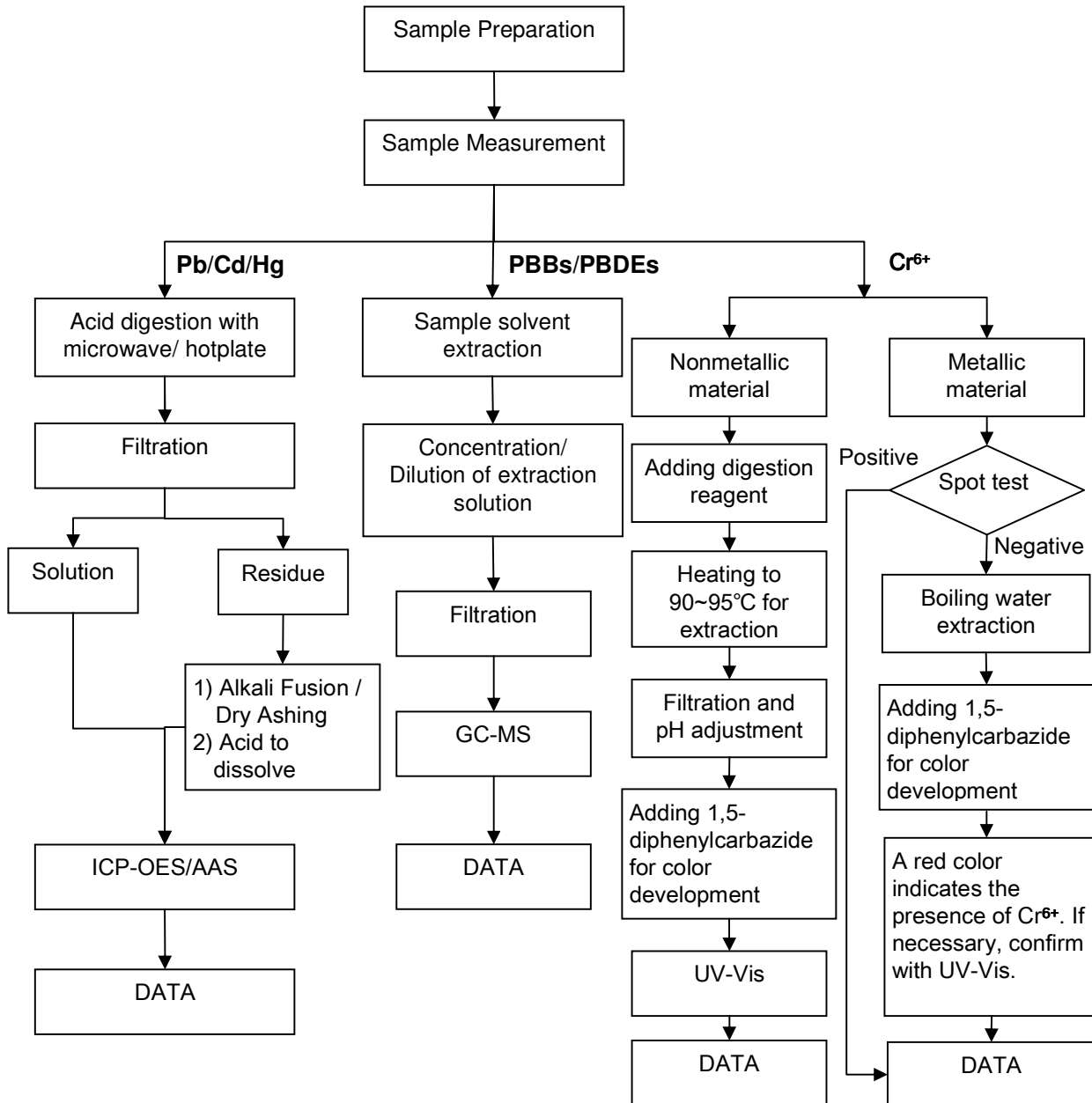
Remark: The sample(s) was/were analyzed on behalf of the applicant as mixing sample in one testing. The above result(s) was/were only given as the informality value and only for reference.

This document is issued by the Company subject to its General Conditions of Service printed overleaf, available on request or accessible at http://www.sgs.com/terms_and_conditions.htm and for electronic format documents, subject to Terms and Conditions for Electronic Documents at www.sgs.com/terms_e-document.htm. Attention is drawn to the limitation of liability, jurisdiction and jurisdiction issues defined therein. Any holder of this document is advised that information contained hereon reflects the Company's findings at the time of its issue and is valid only within the limits of Client's instructions, if any. The Company's sole responsibility is to its Client and this document does not exonerate parties to a transaction from exercising all their rights and obligations under the transaction documents. This document cannot be reproduced except in full, without prior written approval of the Company. Any unauthorized alteration, forgery or falsification of the content or appearance of this document is unlawful and offenders may be prosecuted to the fullest extent of the law. Unless otherwise stated the results shown in this test report refer only to the sample(s) tested.

ATTACHMENTS

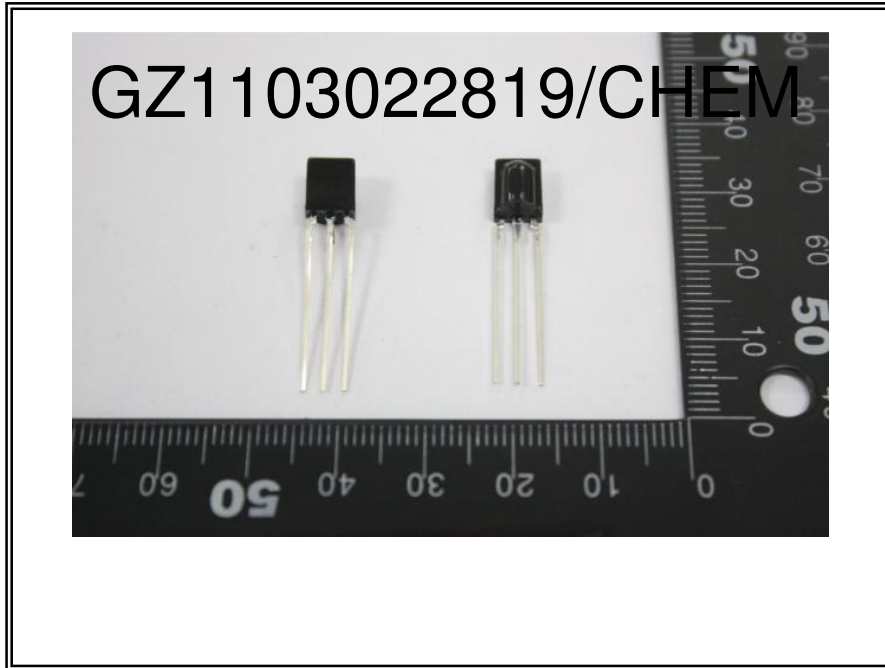
RoHS Testing Flow Chart

- 1) Name of the person who made testing: Bella Wang / Cutey Yu / Ross Zhan
- 2) Name of the person in charge of testing: Adams Yu / Ryan Yang
- 3) These samples were dissolved totally by pre-conditioning method according to below flow chart (Cr6+ and PBBs/PBDEs test method excluded).



This document is issued by the Company subject to its General Conditions of Service printed overleaf, available on request or accessible at http://www.sgs.com/terms_and_conditions.htm and for electronic format documents, subject to Terms and Conditions for Electronic Documents at www.sgs.com/terms_e-document.htm. Attention is drawn to the limitation of liability, indemnification and jurisdiction issues defined therein. Any holder of this document is advised that information contained hereon reflects the Company's findings at the time of its intervention only and within the limits of Client's instructions, if any. The Company's sole responsibility is to its Client and this document does not exonerate parties to a transaction from exercising all their rights and obligations under the transaction documents. This document cannot be reproduced except in full, without prior written approval of the Company. Any unauthorized alteration, forgery or falsification of the content or appearance of this document is unlawful and offenders may be prosecuted to the fullest extent of the law. Unless otherwise stated the results shown in this test report refer only to the sample(s) tested.

Sample photo :



SGS authenticate the photo on original report only

*** End of Report ***

This document is issued by the Company subject to its General Conditions of Service printed overleaf, available on request or accessible at http://www.sgs.com/terms_and_conditions.htm and for electronic format documents, subject to Terms and Conditions for Electronic Documents at www.sgs.com/terms_e-document.htm. Attention is drawn to the limitation of liability, jurisdiction and jurisdiction issues defined therein. Any holder of this document is advised that information contained hereon reflects the Company's findings at the time of its issue and is valid only within the limits of Client's instructions, if any. The Company's sole responsibility is to its Client and this document does not exonerate parties to a transaction from exercising all their rights and obligations under the transaction documents. This document cannot be reproduced except in full, without prior written approval of the Company. Any unauthorized alteration, forgery or falsification of the content or appearance of this document is unlawful and offenders may be prosecuted to the fullest extent of the law. Unless otherwise stated the results shown in this test report refer only to the sample(s) tested.

